

Online monitoring of Crop Cutting Estimation Program (www.cropestimation.com)

Online monitoring, planning and collection of season / crop / village and farmer wise Crop Cutting Estimation information and make it available to the all users in the State.

Project Need

Planning of Block / Mandal / Village and crop wise Crop Cutting Experiment

Agency and crop wise Crop Cutting Experiment supervisory Planning

Collection of Crop and farmer wise CCE data

Collection of Crop and farmer wise Crop Productivity data

Collection of Agency and crop wise CCE supervisory data

Unavailability of real time data leads to delay in decision-making or wrong decision making while executing Crop Insurance Program

All these processes are currently stand-alone and share minimal information across the processes

Huge cafeteria of CCE Planning and its allocation distribution at different hierarchical layers like Agriculture Commissioner, JDA, DSAO, SDAO, and Block Agriculture Officer makes highly difficult to plan, executive & supervise CCE program

Compilation of reports is repetition of same work at various levels makes it difficult to get real time crop productivity data when it executed.

This is very large process and it requires huge manpower. Sending data from one level to another level is very time consuming as it is sent manually. As a result Incomplete data availability leads to delay indecision-making or wrong decision-making.

Project Scope

Define Food and Non Food new crop for CCE Planning and TRAs

Define Crop and Block wise CCE Planning

Allocation of Crop and Block wise CCE

Allocation of Crop and village wise CCE

Allocation of Agency and crop wise CCE Supervisory planning

Facility to enter crop village and farmer wise crop Cutting Experiment Data at Block Level.

Agency and crop wise supervisory data feeding at block level

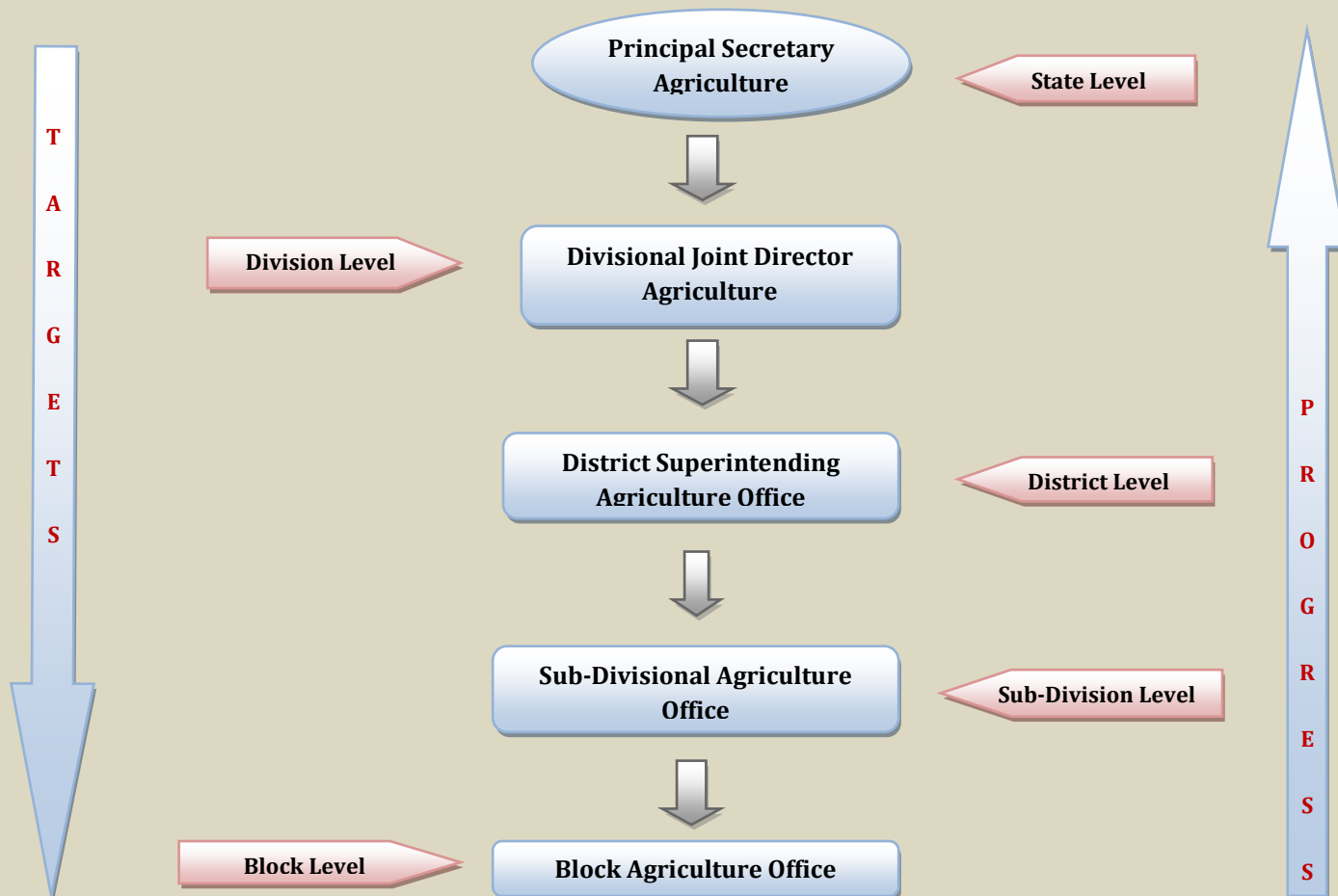
Online monitoring of Crop Cutting Estimation Program (www.cropestimation.com)

Generation of Supervisory report at District / Division / State level in required format in English and local language.

Generation of CCE reports in English and local language in prescribed format at each level

CCE data analysis report at state level in English and local language

Data Flow Diagram



Technology used

Development Tools & Languages

Dot Net Framework 3.5, Asp.net, C#, JavaScript, XML, AJAX Toolkit

Relational Database

MS-SQL Server 2008

Reporting Tool - Crystal Report

Online monitoring of Crop Cutting Estimation Program (www.cropestimation.com)

Product Features

- Developed application is completely Web base application
- System user interface and reports are in local language (Marathi Unicode)
- All Main, Secondary and Fruit Vegetable Crops Cutting Experiments are covered
- Facility to define new Crop for Crop Cutting Experiment (CCE)
- Facility to define District & Block wise new Revenue Mandals for CCE program
- Facility to define Revenue Mandal wise new Villages
- Create Crop & Mandal wise CCE groups for Crop Insurance
- Revenue Mandal and Crop wise Crop Cutting Experiment Planning
- Allocation of Revenue Mandal & crop wise Crop Cutting Experiment
- Allocation of village & crop wise Crop Cutting Experiment
- Facility to enter Village, Crop, Farmer and Experiment wise Crop Cutting Experiment information
- Facility to change in allocated CCE planning at Block Level
- Generates Mandal, Block, District and crop wise Crop productivity & Pre -Estimation report
- Generates crop and farmer wise Crop Cutting Experiment report at each level as per Office hierarchy
- Generates Mandal, Block, District and crop wise Crop Estimation report
- Generates different monitoring reports required at each level as per Office hierarchy

Product Benefits

- User can get real time crop and farmer related data.
- Season and crop wise Village and mandal crop productivity data quickly available
- State level user can get all real time data which is very useful for Crop Insurance Scheme
- Crop Productivity and Pre estimation data which is very useful for policy makers in **agriculture which is getting available in mouse click.**

Online monitoring of Crop Cutting Estimation Program (www.cropestimation.com)

Product Pilot Testing

The product is well tested in Pune, Nashik and Amravati Agriculture Division in the financial period of 2009 to 2011 and submitted the proof of concept to the Principal Secretary, Agriculture Department Govt. of Maharashtra.

Today we have executed this product in all districts of Maharashtra and presently we are completely ready to roll out this product in the country.